



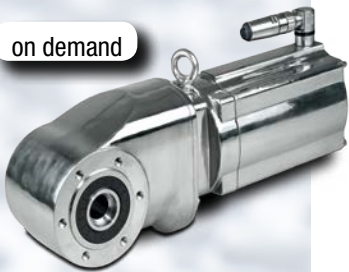
**Hygienic
Drive
Solutions
for the
Food and
Pharmaceutical
Industry**



 **Bauer**[®]
Gear Motor

An Altra Industrial Motion Company

on demand

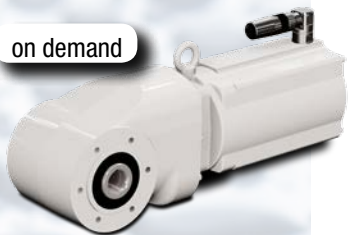


EXTREME WORKING CONDITIONS

AsepticDrive™-VA

- Motor power IE4 0,75 kW – 1,5 kW
IE2, IE3 0,25 kW – 0,55 kW
- Gear box size 330 Nm
- Gear box type BK
- Resistant and non-corrosive stainless steel housing

on demand

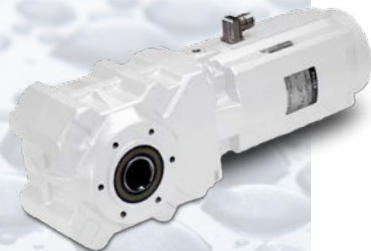


AsepticDrive™

- Motor power IE4 0,75 kW – 2,2 kW
IE2, IE3 0,25 kW – 1,1 kW
- Gear box size 330 Nm
- Gear box type BK
- With acid and alkali resistant coating (pH2 bis pH12)

AsepticDrive™

- Motor power IE4 0,75 kW – 5,5 kW
IE2, IE3 0,25 kW – 2,2 kW
- Gear box sizes 200 - 1050 Nm
- Gear box types BG, BF, BK
- With acid and alkali resistant coating (pH2 bis pH12)
- Hygienically sealed brakes and/or encoder mounting



MODERATE WORKING CONDITIONS

CleanDrive™

- Motor power IE4 0,75 kW – 5,5 kW
IE2, IE3 0,25 kW – 2,2 kW
- Gear box sizes 200 - 1050 Nm
- Gear box types BG, BF, BK
- Hygienically sealed brakes and/or encoder mounting
- Optional über Klemmenkasten (IP66)

CleanDrive™

- Motor power 0,06 kW – 0,12 kW
- Gear box BK06 80 Nm
- Gear box BF06 90 Nm
- Standard terminal box optional (IP65)

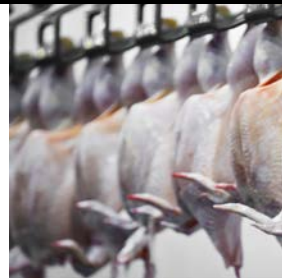


FEATURES

- Iso Class F and thermistors as standard
- Enclosure IP 67 and IP 69K
- Non-ventilated, hence no re-infections in the surrounding area
- Motor connection via stainless steel plug connector

FEATURES

- Iso Class F and thermistors as standard
- Enclosure IP 67
- Non-ventilated, hence no re-infections in the surrounding area
- With acid and alkali resistant coating (pH2 bis pH12)
- Motor connection via stainless steel cable gland





STANDARD WORKING CONDITIONS

Series BG Helical Geared Motors

- Motor power 0,03kW - 75 kW
- 13 Gear box sizes 20 Nm 18500 Nm

Series BF Shaft Mounted Geared Motors

- Motor power 0,03 kW - 75 kW
- 10 Gear box sizes 90 Nm 18500 Nm

Serie BK Bevel Geared Motors

- Motor power 0,03 kW - 75 kW
- 10 Gear box sizes 80 Nm 18500 Nm

Series BS Worm Geared Motors

- Motor power 0,03 kW - 5,5 kW
- 8 Gear box sizes 25 Nm 1000 Nm



CUSTOMER SPECIFIC SOLUTIONS

e.g. BG50.../DA09.../VA

- Motor power IE4 0,75 kW – 1,5 kW
IE2, IE3 0,25 kW – 0,55 kW
- Iso Class F and thermistors as standard
- Enclosure IP 67 and IP 69K
- Non-ventilated, hence no re-infections in the surrounding area
- Resistant and non-corrosive stainless steel housing
- Motor connection via stainless steel plug connector
- Standard- and C-flange



ATEX - EXPLOSION PROTECTION

Motor type of protection *	Zone	Temperature class T3	max. surface temperature <160°C	Availability
II 2 G Ex e II T2	1	X		on request
II 3 G Ex nA II T3	2	X		on request
II 2 D Ex tD A21 IP65T<160°C	21		X	on request
II 3 D Ex tD T<160°C	22		X	on request

The term **ATEX** is derived from **Atmosphères explosibles**. The designations **95** and **137** relate to the renumbering of the article of the first Treaty establishing the EU.

ATEX 95: Directive 94/9/EC to approximate the laws of the Member States for devices and protection systems for intended use in potentially explosive atmospheres; mandatory for bringing to market since 1 July 2013.

ATEX 137: Directive 1999/92/EC on minimum requirements for improving the safety and health protection of workers potentially at risk from explosive atmospheres; mandatory for the operation of new systems since 1 July 2003 and mandatory for the adaptation of the operating regulations of existing plants from 1 July 2006.



Motortype	Power	Feature
DA05LA4	0,06 kW	
DA05LA4	0,09 kW	
DA05LA4	0,12 kW	
DA08LA4	0,25 kW	
DA08LA4	0,37 kW	acc. to IE3
DA09LA4	0,55 kW	acc. to IE3
DA09XA4	0,75 kW	IE3
DA09XA4	1,1 kW	IE2
DA11LA4	1,5 kW	IE3
DA11LA4	2,2 kW	IE2

Couplings

Ameridrives Couplings

Mill Spindles, Ameriflex, Ameridisc
Erie, PA - USA
1-814-480-5000

Gear Couplings

San Marcos, TX - USA
1-800-458-0887

Bibby Turboflex

Disc, Gear, Grid Couplings,
Overload Clutches

Dewsbury, England
+44 (0) 1924 460801

Boksburg, South Africa
+27 (0) 11 918 4270

TB Wood's

Elastomeric Couplings

Chambersburg, PA - USA
1-888-829-6637 – Press #5

For application assistance:
1-888-829-6637 – Press #7

General Purpose Disc Couplings

San Marcos, TX - USA
1-888-449-9439

Ameridrives Power Transmission

*Universal Joints, Drive Shafts,
Mill Gear Couplings*

Green Bay, WI - USA
1-920-593-2444

Huco Dynatork

*Precision Couplings
and Air Motors*

Hertford, England
+44 (0) 1992 501900

Chambersburg, PA - USA
1-888-829-6637

Lamiflex Couplings

*Flexible Couplings, Bearing Isolators,
and Coupling Guards*

São Paulo, SP - Brasil
+55 (11) 5679-6533

Guardian Couplings

*Flywheel, Jaw, Shear, Gear, Grid,
Disc and Engine Couplings*

Michigan City, IN - USA
1-219-874-5248

**Engineered
Bearing Assemblies**

Kilian Manufacturing

Engineered Bearing Assemblies

Syracuse, NY - USA
1-315-432-0700

**Electromagnetic
Clutches and Brakes**

Warner Electric

*Electromagnetic Clutches
and Brakes*

New Hartford, CT - USA
1-800-825-6544

For application assistance:
1-800-825-9050

Saint Barthélemy d'Anjou, France
+33 (0) 2 41 21 24 24

*Precision Electric Coils and Electro-
magnetic Clutches and Brakes*

Columbia City, IN - USA
1-260-244-6183

Matrix International

*Electromagnetic Clutches
and Brakes, Pressure Operated
Clutches and Brakes*

Brechin, Scotland
+44 (0) 1356 602000

New Hartford, CT - USA
1-800-825-6544

Inertia Dynamics

*Spring Set Brakes; Power On and
Wrap Spring Clutch/Brakes*

New Hartford, CT - USA
1-800-800-6445

Overrunning Clutches

Formsprag Clutch

*Overrunning Clutches
and Holdbacks*

Warren, MI - USA
1-800-348-0881 – Press #1

For application assistance:
1-800-348-0881 – Press #2

Marland Clutch

*Roller Ramp and Sprag Type Over-
running Clutches and Backstops*

South Beloit, IL - USA
1-800-216-3515

Stieber Clutch

*Overrunning Clutches
and Holdbacks*

Heidelberg, Germany
+49 (0) 6221 30 47 0

Belted Drives and Sheaves

TB Wood's

Belted Drives

Chambersburg, PA - USA
1-888-829-6637 – Press #5

For application assistance:
1-888-829-6637 – Press #7

**Heavy Duty
Clutches and Brakes**

Wichita Clutch

Pneumatic Clutches and Brakes

Wichita Falls, TX - USA
1-800-964-3262

Bedford, England
+44 (0) 1234 350311

Twiflex Limited

Caliper Brakes and Thrusters

Twickenham, England
+44 (0) 20 8894 1161

Industrial Clutch

*Pneumatic and Oil Immersed
Clutches and Brakes*

Waukesha, WI - USA
1-262-547-3357

Svendborg Brakes

*Industrial Brakes and
Brake Systems*

Vejstrup, Denmark
+45 63 255 255

Gearing

Boston Gear

*Enclosed and Open Gearing,
Electrical and Mechanical
P.T. Components*

Charlotte, NC - USA
1-800-825-6544

For application assistance:
1-800-816-5608

Bauer Gear Motor

Gearred Motors

Esslingen, Germany
+49 (711) 3518-0

Somerset, NJ - USA
1-732-469-8770

**Nuttall Gear and
Delroyd Worm Gear**

*Worm Gear and
Helical Speed Reducers*

Niagara Falls, NY - USA
1-716-298-4100

Linear Products

Warner Linear

Linear Actuators

Belvidere, IL - USA
1-800-825-6544

For application assistance:
1-800-825-9050

Saint Barthélemy d'Anjou, France
+33 (0) 2 41 21 24 24

Bauer Gear Motor

Bauer Gear Motor GmbH

Eberhard-Bauer-Straße 37
73734 Esslingen - Germany

+49 711 3518 0
+49 711 3518 381 (Fax)

**Bauer Gear Motor
Slovakia s.r.o.**

Tovarenská 49
953 01 Zlate Moravce - Slovakia

+421 37 6926100
+421 37 6926181 (Fax)

Bauer Gear Motor Limited

Nat Lane Business Park
Winsford, Cheshire
CW7 3BS - United Kingdom

+44 1606 868600
+44 1606 868603 (Fax)

Bauer Gear Motor LLC

31 Schoolhouse Rd.
Somerset NJ 08873-1212 - USA

+1 732 469 8770
+1 732 469 8773 (Fax)

**Altra Industrial Motion
(Shenzhen) Co., Ltd.**

18 Huan Zhen Road Dabo
Industrial Zone - BoGoang Village
ShaJing Town - BaoAn District
Guangdong Province
518104 Shenzhen City - China

+86 755 27246308
+86 755 27246017 (Fax)

Altra Industrial Motion 000

Volokolamskoye sh., 142, bldg 6
Business Center „Irbis“
125464 Moscow - Russia

+7 495 6420468
+7 495 6420469 (Fax)

Customer Centre Finland

01510 Vantaa
+358 207 189700

Customer Centre France-Benelux

Brussel (Anderlecht)
+32 2 5295941

Customer Centre Italy

Grignano di Zocco (VI)
+39 0444 414392

Bauer assumes no liability or responsibility for misprints and errors in catalogues, brochures and other printed documentation. Bauer reserves the right to make changes to products without prior notice, including to products that have already been ordered, unless contractual technical specifications are affected by such changes. All trademarks in these publications are the sole and exclusive property of the relevant companies. Bauer and the Bauer Logo are trademarks of Bauer Gear Motor GmbH. All rights reserved.



An Altra Industrial Motion Company

www.bauergears.com

31 Schoolhouse Road
Somerset, NJ 08873 - USA
Tel: 732-469-8770
Fax: 732-469-8773

Eberhard Bauer Straße 37
73734 Esslingen - Germany
+49 711 3518-0
Fax: +49 7113518-381